

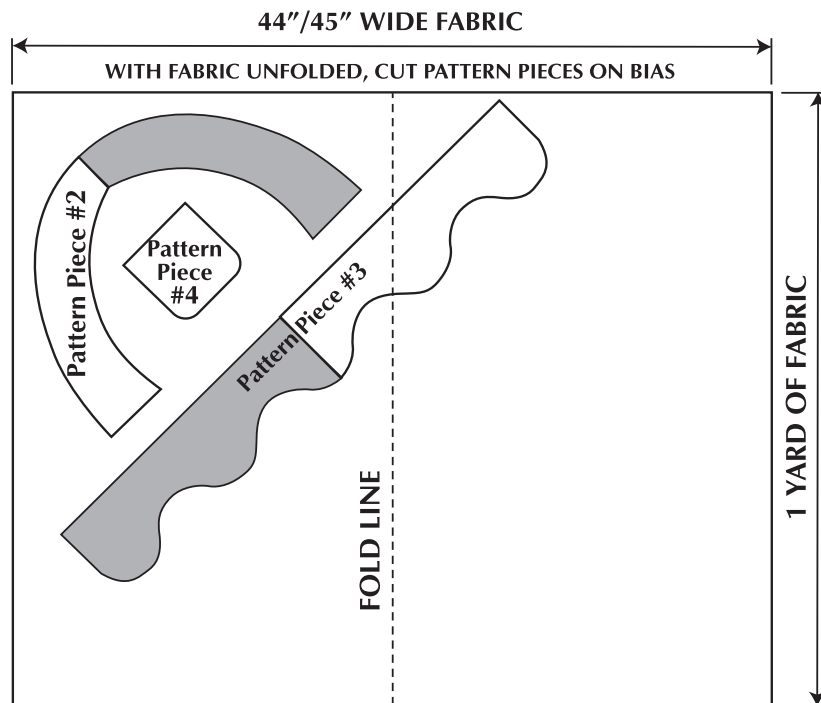
# Correction Page COOK'S COVER UP

by Kathy Fernholz IJ733 ©2006 INDYGO JUNCTION, INC.

## REVISIONS/CHANGES TO APRON "A" ONLY:

Revised **Materials Needed** requirements, new pattern pieces cutting diagram, and revised cutting instructions.

1. For Apron A (red embroidered apron) you will need **1 yard of plaid fabric** (instead of a 1/2 yard).
2. **New pattern/cutting layout diagram below for Pattern Pieces #2, #3, and #4**, cut on the bias with 1 yard of fabric.



### 3. Change Assembly Instruction #1 to read:

Cut out the following pattern pieces from cream fabric:

Pattern Piece #1 – cut one on fold

Cut out the following pattern pieces from plaid fabric, per cutting diagram above:

Pattern Piece #2 – cut one on bias

Pattern Piece #3 – cut one on bias

Pattern Piece #4 – cut one on bias

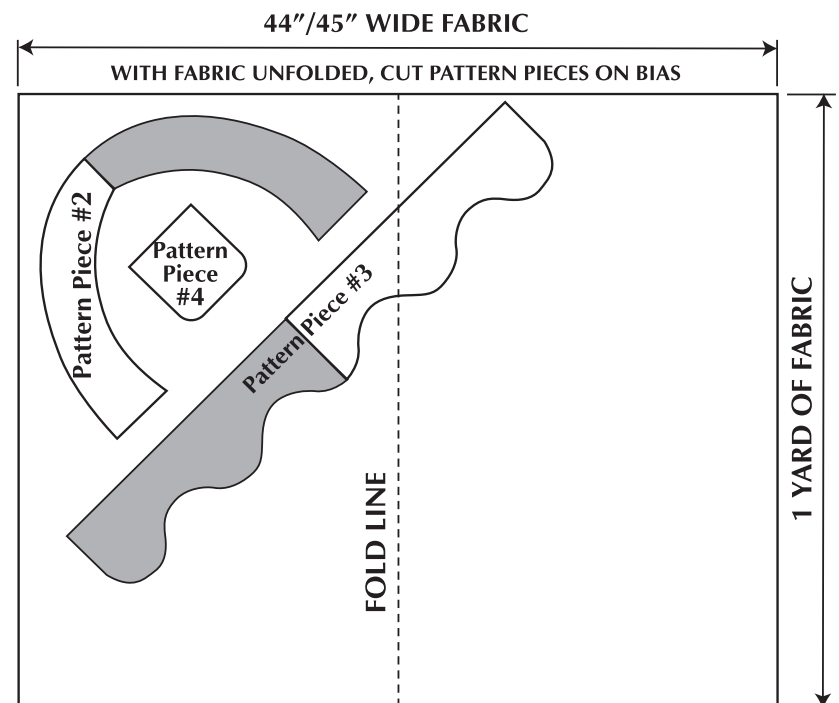
# Correction Page COOK'S COVER UP

by Kathy Fernholz IJ733 ©2006 INDYGO JUNCTION, INC.

## REVISIONS/CHANGES TO APRON "A" ONLY:

Revised **Materials Needed** requirements, new pattern pieces cutting diagram, and revised cutting instructions.

1. For Apron A (red embroidered apron) you will need **1 yard of plaid fabric** (instead of a 1/2 yard).
2. **New pattern/cutting layout diagram below for Pattern Pieces #2, #3, and #4**, cut on the bias with 1 yard of fabric.



### 3. Change Assembly Instruction #1 to read:

Cut out the following pattern pieces from cream fabric:

Pattern Piece #1 – cut one on fold

Cut out the following pattern pieces from plaid fabric, per cutting diagram above:

Pattern Piece #2 – cut one on bias

Pattern Piece #3 – cut one on bias

Pattern Piece #4 – cut one on bias